



the  
**heritage**

P A T N A

PLATINUM & MUNDESHWARI



WHATEVER YOU  
ARE THINKING,  
**THINK BIGGER**

Imagine your business right in the centre of a new retail outlet with all the ingredients for Retail Success and Immediate High Returns. Don't you think you should grab this opportunity?

WELCOME TO THE  
**BUSINESS &  
RETAIL NUCLEUS**  
OF THE FUTURE



ENVISION THE  
**FIRST MALL  
IN BIHAR**  
THAT GUARANTEES  
UNPARALLELED FOOTFALL



## **PATNA** THE LAND OF PROFITABILITY

IMAGINE A COMMERCIAL  
GIANT THAT KEEPS  
GROWING EVERY YEAR

 **POPULATION**  
58,00,000 APPROX

**65%** **POPULATION**  
BELOW 35 YEARS

**50%** **POPULATION**  
WITHIN 30 MIN DRIVE

 **11,00,000**  
HOUSEHOLDS  
AND GROWING

 **5,000-6,000**  
PASSENGERS LANDING  
EVERY DAY & 15 MIN AWAY  
(11,000 EXPECTED WITHIN 3 YRS)

**RO** **3,00,000**  
AVERAGE YEARLY  
EXPENDITURE PER FAMILY

A COMMERCIAL &  
RETAIL EXPERIENCE  
DESIGNED TO  
**LEAD THE FUTURE**



RETAIL AREA  
**2,96,800**  
sqft

OFFICES  
**78,000**  
sqft

FOOD & BEVERAGES  
**57,000**  
sqft

MULTIPLEX  
**49,000**  
sqft

ENTERTAINMENT  
**10,600**  
sqft

PARKING  
**1,12,000**  
sqft



RISE WITH THE  
**grand**  
**heritage**

BE A PART OF  
**PATNA'S**  
**RETAIL**  
REVOLUTION



FIVE DIVERSE  
**WORLDS OF  
OPPORTUNITIES**  
UNDER ONE ROOF



SMART OFFICES



6-SCREEN MULTIPLEX



ENTERTAINMENT  
ZONE



RETAIL



FOOD & BEVERAGES



Retail Shops  
**118**  
shops



## A WORLD OF PROFITS

The Heritage, Patna is designed to maximize your investments exponentially. Its innovative design and strategic location advantage makes it a revolutionary commercial wonder that is all set to bring in profits.



# VISIONARY DESIGN, **FLEXIBLE & MODULAR SIZE**

The design of The Heritage Mall is crafted with a thorough understanding of the customer's expectations. The façade and the shops are designed to be easily accessed by the visitors and shoppers, that helps increase footfall.










Ideal for retail outlets, speciality shops, fine dining, corporate offices, boutique firms and companies on the rise...





## THE NUMBERS ARE ON YOUR SIDE

The Heritage, Patna, a world-class mixed use retail and entertainment development is designed to attract footfall above all expectations. Offering limitless shopping, entertainment, lavish office spaces and fun zones, The Heritage is soon to become the talk of the town.

-  UNMATCHED LOCATION
-  AMPLE PARKING
-  ELEVATORS & ESCALATORS
-  CCTV CAMERAS IN COMMON AREAS
-  POWER BACK UP
-  INTEGRATED SECURITY FEATURES
-  DEDICATED WI-FI ZONE
-  AIR-CONDITIONED INDOORS
-  FIRE SAFETY AS PER GOVERNMENT NORMS

# SPICE GALI

Authentic Lip-Smacking  
Street Food at One Spot



BAKERY SHOP

BURGER PIZZA

CAFFEE

ARTES  
Bar Bistro Ga

S.P.

Rare

tro

etro

Restro

Restro

Restro

ZA  
JON

EXPERIENCE THE  
**SOCIAL  
HANGOUT**



# ALL ROADS LEAD TO GREATER GAINS

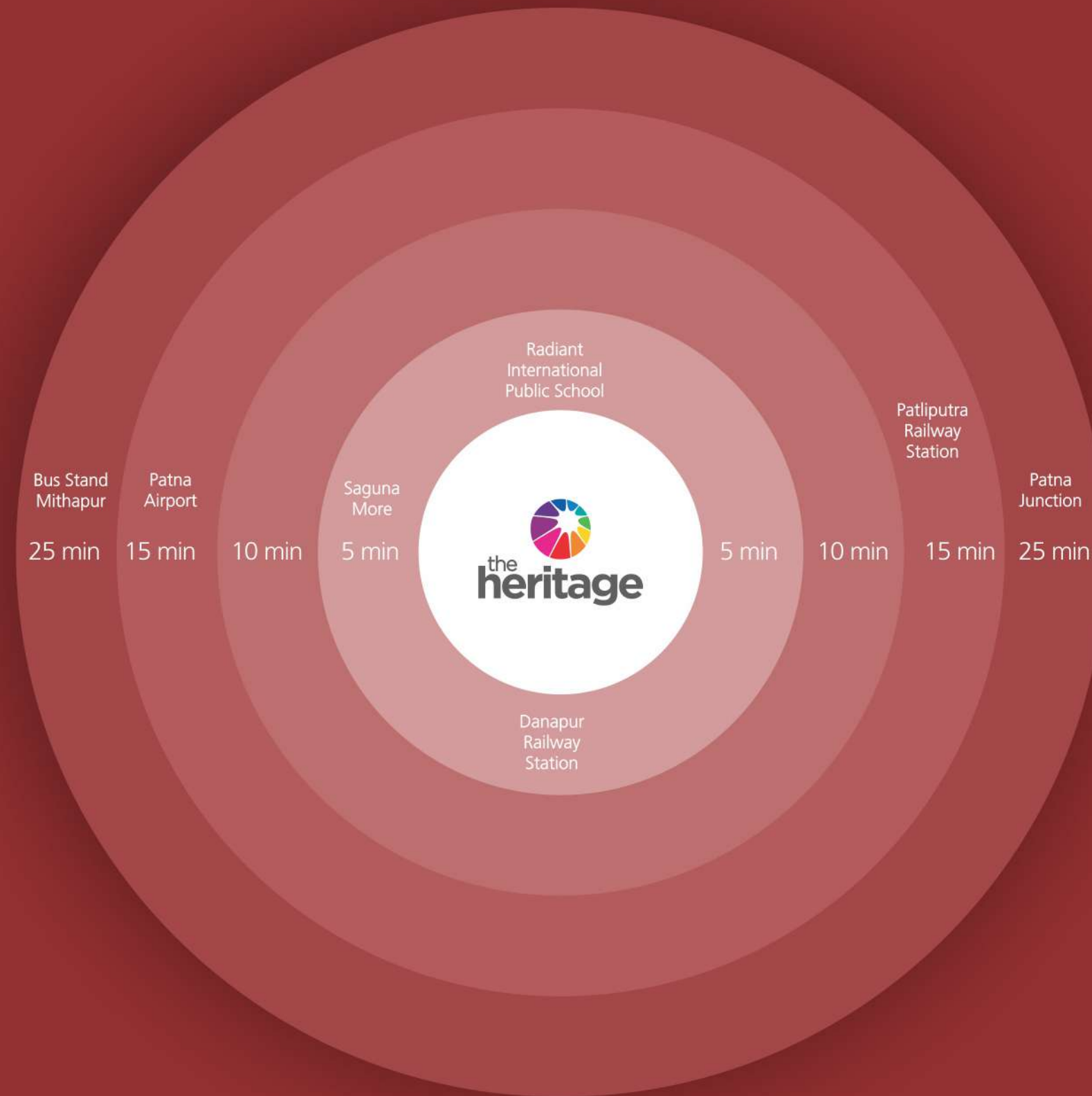
The Heritage Mall can claim to give a new meaning to strategic location.

Spread across 2.75 acres of land, The Heritage Mall is destined to successfully deliver unparalleled shopping experience while revolutionizing the organized retail sector in Patna simultaneously.

It promises to be an exclusive destination with superb connectivity to all prominent commercial & entertainment hubs. Carving a niche for itself, owing to its close proximity to Patna's prominent locations and easy accessibility, this architectural marvel with a perfect 4-side visibility is a befitting prelude to the next big retail story of Patna.



# DISTINGUISHED LOCATION



Bus Stand Mithapur	12.9 Kms
Danapur Railway Station	2.0 Kms
Patliputra Railway Station	9.3 Kms
Patna Junction	13.8 Kms
Radiant Int'l Public School	0.13 Kms
Patna Airport	9.0 Kms
Saguna More	2.7 Kms



WITNESS THE  
RISING CURVE  
**AMPLE**  
**CHOICES**



## RETAIL

Geared towards retail therapy, The Heritage, Patna offers spacious and thoughtfully designed showrooms. The atrium welcomes the shoppers to feast on a world of national and international brands. The ground, first and second floors are dedicated to upscale and exclusive brands.

- Multiple anchor stores
- Hyper Mart
- Over 50 brand stores
- 2.97 lakh sqft of high-end retail
- Leasing tie-ups
- Centrally air-conditioned
- Power back-up
- Direct atrium access
- Six elevators
- Escalator connecting every floor





CUISINES THAT  
**CATER THE  
WORLD**



## FOOD & BEVERAGES

The F&B at The Heritage offers an unlimited array of tasteful choices that attract people from all walks of life and from around the world. The F&B will have 1 food court, 1 food street, 3 fine dining and 1 food anchor serving various flavours to cater to everyone's needs.

- 57,000 sq ft. for eateries
- Centrally air-conditioned court
- Serving the finest
- Dedicated seating
- Variety of authentic cuisines at Food Street
- Hi-tech fire fighting

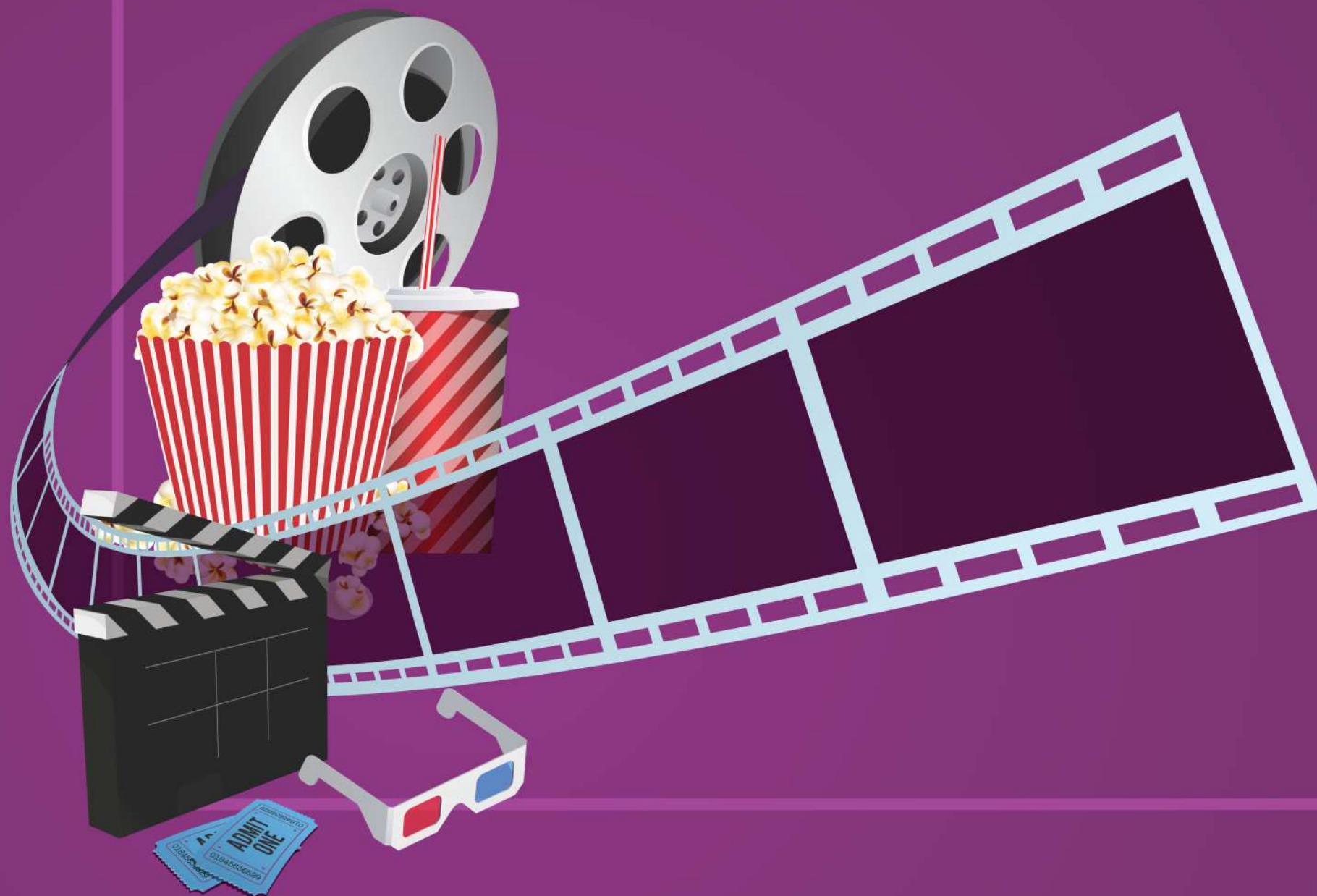




FIRST TIME IN PATNA  
**TWO CONNECTING  
ATRIUMS**



RETURNS LIKE  
THE BIG  
**BOX**  
OFFICE



## 6-SCREEN MULTIPLEX

You can have an exquisite movie experience at the multiplex level which offers the most advanced and luxurious 6-screen cinematic experience. The area is more than enough to handle all the savvy movie-goers as it accommodates a seating capacity of over 1000 seats. Bring everyone along whenever you go for your favorite movies.

- Cinematic Experience
- 6-Screen Multiplex
- Digital Dolby Sound
- Hi-tech Projection System
- Comfortable Seating





DESIGNED FOR  
PEOPLE TO  
**COME BACK**  
**FOR MORE**



## ENTERTAINMENT ZONE

Music, games and a great recreational time is what The Heritage promises. Be it kids or adults, The Heritage has something beautiful and satisfying for everyone. It is a one-stop family destination and entertainment world to speak less. Excitement among the visitors will never fade as they will continue to explore the multiple options of nothing but premium entertainment.

- Video Games
- Dedicated Gaming Zone
- Snooker
- Sports shop
- Toy shop





IDEAS TO  
STARTUPS TO  
**GREATER**  
**ROI**

## OFFICE SPACE

The boutique office spaces at The Heritage, Patna will soon be the choice of young entrepreneurs, creative professionals and young brands. The office spaces will offer proximity to important business hubs of the city. Offices at The Heritage will feature a dedicated reception lobby, 3 dedicated elevators and wide corridors that will make the offices look very desirable.

- 78,000 sq ft. of office spaces
- 146 offices
- 4 floor spread
- Fully Operational work place
- Separate Entry Exit
- Dedicated Lifts
- Lockable Office Spaces
- Hi-Speed Wi-Fi Internet Facility
- State-of-the-art Security Systems



## FEATURES THAT STEAL THE RETAIL LIMELIGHT

In today's cut-throat competitive market it is vital to incorporate new advanced facilities and amenities in every residential or commercial property.

The Heritage Mall is being planned to provide the latest of everything.

Some of these features include

- Low Maintenance Module
- 100% Power Back-up
- Large Store-Fronts and Wide Arcades along all Stores
- Fire Safety as per Government norms
- 24x7 Gated Security with Surveillance Cameras
- High Speed Elevators and Escalators





## GRASP THE UNFOLDING OPPORTUNITY INVEST IN THE FINEST DEVELOPMENT

### KNOW WHY?

- lack of good commercial property options in Patna
- affluent location with high network & easy connectivity
- value for money proposition with high rental returns
- dedicated leasing options from the developers
- brand tie-ups to ensure footfall
- mall promotions to be managed by developer

# FLOOR PLAN

AREA (in SQFT)



SHOP NO.	USAGE	CARPET AREA	BUILT UP AREA	SUPER AREA	SHOP DIMENSIONS
L01	F & B	438	477	729	17'-2" X 25'-7"
L02	F & B	477	516	789	18'-9" X 25'-7"
L03	F & B	326	347	530	12'-9.5" X 25'-7"
L04	F & B	326	347	530	12'-9.5" X 25'-7"
L05	F & B	326	347	530	12'-9.5" X 25'-7"
L06	F & B	326	347	530	12'-9.5" X 25'-7"
L07	F & B	325	361	552	25'-11" X 12'-7"
L08	SHOP	327	347	530	25'-11" X 12'-7"
L09	SHOP	282	303	464	25'-11" X 11'-0"
L10	SHOP	324	361	552	25'-11" X 12'-7"
L11	SHOP	303	325	497	12'-9.5" X 23'-11.5"
L12	SHOP	303	325	497	12'-9.5" X 23'-11.5"
L13	SHOP	303	325	497	12'-9.5" X 23'-11.5"
L14	SHOP	313	348	532	12'-9.5" X 23'-11.5"
L15	SHOP	456	495	757	19'-3" X 23'-11.5"
L16	F & B	409	447	684	17'-3" X 23'-11.5"
L17	SHOP	355	398	609	27'-3" X 13'-1.5"
L18	SHOP	528	585	896	27'-3" X 19'-8.5"
L19	FOOD ANCHOR	7425	7640	11689	105'-7.5" X 57'-1"
L20	HYPERMART	24171	24680	37761	
TOTAL		38043	39321	60155	



**LOWER GROUND FLOOR**

# FLOOR PLAN

AREA (in SQFT)



SHOP NO.	USAGE	CARPET AREA	BUILT UP AREA	SUPER AREA	SHOP DIMENSIONS
G001	SHOP	1379	1473	2254	27'-1" X 51'-6"
G002	SHOP	1608	1722	2635	25'-11" WIDE
G003	SHOP	1430	1525	2333	25'-11" WIDE
G004	SHOP	1568	1633	2498	25'-11" X 54'-9"/63'0"
G005	SHOP	1622	1688	2582	25'-11" X 63'-0"
G006	ANCHOR	5901	6100	9333	99'-5"/103'-1" X 63'-0"/53'-9.5"
G007	SHOP	528	584	893	42'-7.5" X 12'-5.5"
G008	SHOP	530	565	864	41'-8.5" X 12'-9.5"
G009	SHOP	517	551	843	40'-9" X 12'-9.5"
G010	SHOP	506	540	826	39'-9.5" X 12'-9.5"
G011	SHOP	494	528	808	38'-10.5" X 12'-9.5"
G012	SHOP	473	522	798	37'-11.5" X 12'-5.5"
G013	SHOP	1292	1478	2261	36'-6"/34'-5.5" X 40'-8"/33'-0.5"
G014	SHOP	1930	2033	3111	41'-2"/42'-9.5" X 52'-1.5"/41'-1.5"
G015	SHOP	786	820	1255	41'-2.5" X 19'-1"
G016	SHOP	1294	1367	2091	26'-5" X 49'-2.5"
G017	SHOP	1272	1318	2016	25'-11" X 49'-2.5"
G018	SHOP	1272	1318	2016	25'-11" X 49'-2.5"
G019	SHOP	1272	1318	2016	25'-11" X 49'-2.5"
G020	SHOP	1270	1326	2029	25'-11" X 49'-2.5"
G021	SHOP	877	945	1446	17'-10.5" X 49'-2.5"
G022	ANCHOR	11090	11515	17617	
G023	BOX OFFICE	106	129	197	
TOTAL		39017	40998	62722	



**UPPER GROUND FLOOR**

# FLOOR PLAN

AREA (in SQFT)



SHOP NO.	USAGE	CARPET AREA	BUILT UP AREA	SUPER AREA	SHOP DIMENSIONS
101	SHOP	1513	1611	2464	27'-1" X 56'-5"
102	SHOP	1455	1544	2362	25'-11" X 56'-5"
103	SHOP	2011	2095	3205	25'-1" WIDE
104	SHOP	1454	1516	2319	25'-11" X 56'-5"
105	SHOP	1454	1516	2319	25'-11" X 56'-5"
106	ANCHOR	5842	6032	9229	
107	SHOP	541	597	914	43'-7.5" X 12'-5.5"
108	SHOP	544	578	885	42'-8.5" X 12'-9.5"
109	SHOP	532	565	865	41'-9.5" X 12'-9.5"
110	SHOP	520	553	846	40'-10" X 12'-9.5"
111	SHOP	508	541	828	39'-10.5" X 12'-9.5"
112	SHOP	486	537	822	38'-11.5" X 12'-5.5"
113	SHOP	1277	1383	2116	37'-5"/36'-10" X 39'-2.5" / 30'-8.5"
114	SHOP	1656	1787	2735	34'-7"/35'-1.5" X 52'-4"/43'-1"
115	SHOP	660	692	1060	34'-7.5" X 19'-1.5"
116	SHOP	847	902	1380	19'-10" X 42'-8"
117	SHOP	1101	1145	1752	25'-11" X 42'-8"
118	SHOP	1102	1145	1752	25'-11" X 42'-8"
119	SHOP	1102	1145	1752	25'-11" X 42'-8"
120	SHOP	1122	1195	1829	26'-5" X 42'-8"
121	ANCHOR	11963	13357	20436	
TOTAL		37690	40436	61870	



**FIRST FLOOR**



# FLOOR PLAN

AREA (in SQFT)



SHOP NO.	USAGE	CARPET AREA	BUILT UP AREA	SUPER AREA	SHOP DIMENSIONS
201	SHOP	687	756	1156	13'-11.5" X 49'-10.5"
202	SHOP	634	672	1028	12'-9.5" X 49'-10.5"
203	SHOP	634	672	1028	12'-9.5" X 49'-10.5"
204	SHOP	622	672	1028	12'-5.5" X 49'-10.5"
205	SHOP	1218	1292	1977	11'-11.5" WIDE
206	SHOP	634	672	1028	12'-9.5" X 49'-10.5"
207	SHOP	634	672	1028	12'-9.5" X 49'-10.5"
208	SHOP	634	672	1028	12'-9.5" X 49'-10.5"
209	SHOP	634	672	1028	12'-9.5" X 49'-10.5"
210	SHOP	634	672	1028	12'-9.5" X 49'-10.5"
211	ANCHOR	5413	5581	8539	
212	SHOP	460	510	781	37'-1" X 12'-5.5"
213	SHOP	460	492	752	36'-2" X 12'-9.5"
214	SHOP	448	479	733	35'-2.5" X 12'-9.5"
215	SHOP	436	467	715	34'-3.5" X 12'-9.5"
216	SHOP	424	455	696	33'-4" X 12'-9.5"
217	SHOP	413	459	702	32'-4.5" X 12'-9.5"
218	SHOP	1013	1112	1701	30'-10"/30'-0" X 37'-7"/30'-4.5"
219	SHOP	1264	1351	2066	26'-1"/25'-8.5" X 52'-0.5" X 45'-0"
220	SHOP	498	527	806	26'-1" X 19'-1.5"
221	SHOP	467	523	800	13'-3.5" X 36'-1"
222	SHOP	933	973	1488	25'-11" X 36'-1"
223	SHOP	932	973	1489	25'-11" X 36'-1"
224	SHOP	932	973	1489	25'-11" X 36'-1"
225	SHOP	932	973	1489	25'-11" X 36'-1"
226	SHOP	632	681	1042	17'-10.5" X 36'-1"
227	ANCHOR	11517	13293	20338	
TOTAL		34139	37246	56983	



**SECOND FLOOR**

# FLOOR PLAN

AREA (in SQFT)



SHOP NO.	USAGE	CARPET AREA	BUILT UP AREA	SUPER AREA	SHOP DIMENSIONS
301	SHOP	686	756	1156	13'-11.5" X 49'-10.5"
302	SHOP	634	672	1028	12'-9.5" X 49'-10.5"
303	SHOP	634	672	1028	12'-9.5" X 49'-10.5"
304	SHOP	622	672	1028	12'-5.5" X 49'-10.5"
305	SHOP	1218	1292	1977	11'- 11.5" WIDE
306	SHOP	634	672	1028	12'-9.5" X 49'-10.5"
307	SHOP	634	672	1028	12'-9.5" X 49'-10.5"
308	SHOP	634	672	1028	12'-9.5" X 49'-10.5"
309	SHOP	634	672	1028	12'-9.5" X 49'-10.5"
310	SHOP	634	672	1028	12'-9.5" X 49'-10.5"
311	ANCHOR	5413	5581	8539	
312	SHOP	460	510	781	37'-1" X 12'-5.5"
313	SHOP	460	492	752	36'-2" X 12'-9.5"
314	SHOP	448	490	750	35'-2.5" X 12'-9.5"
315	SHOP	436	467	715	34'-3.5" X 12'-9.5"
316	SHOP	424	455	696	33'-4" X 12'-9.5"
317	SHOP	413	459	702	32'-4.5" X 12'-9.5"
318	SHOP	1014	1113	1703	30'-10"/30'-0" X 37'-7" / 28'-7.5"
319	SHOP	1264	1351	2067	26'-1"/25'-8.5" X 52'-4" / 45'-1.5"
320	SHOP	498	527	806	26'-1" X 19'-1.5"
321	SHOP	477	523	800	13'-3.5" X 36'-1"
322	SHOP	933	973	1488	25'-11" X 36'-1"
323	SHOP	932	973	1489	25'-11" X 36'-1"
324	SHOP	932	973	1489	25'-11" X 36'-1"
325	SHOP	932	973	1489	25'-11" X 36'-1"
326	SHOP	632	681	1042	17'-6" X 17'-6.5"
327	ANCHOR	11666	11936	18263	
TOTAL		34298	35901	54928	

# FLOOR PLAN

AREA (in SQFT)



SHOP NO.	USAGE	CARPET AREA	BUILT UP AREA	SUPER AREA	SHOP DIMENSIONS
401	KIDS SHOP	1340	1427	2183	27'-0.5" X 49'-10.5"
402	KIDS SHOP	1286	1368	2094	25'-11" X 49'-10.5"
403	KIDS SHOP	1535	1632	2497	26'-1" WIDE
404	KIDS SHOP	1307	1377	2107	26'-5" X 49'-10.5"
405	GAMING	6678	6891	10543	
406	FINE DINING 1	2011	2136	3268	25'-11" X 77'-9"
407	FOOD COURT (FC1)	17897	18380	28122	
408	KIOSK-1	662	672	1028	36'-11" X 18'-0.5"
409	KIOSK-2	666	672	1028	36'-11" X 18'-0.5"
410	KIOSK-3	618	624	954	36'-11" X 16'-9"
411	KIOSK-4	614	630	963	36'-11" X 16'-9"
412	KIOSK-5	618	630	963	36'-11" X 16'-9"
413	KIOSK-6	618	617	944	36'-11" X 16'-9"
414	KIOSK-7	309	424	649	25'- 5.5" X 12'-1.5"
415	KIOSK-8	309	424	649	25'- 5.5" X 12'-1.5"
TOTAL		36468	37904	57992	



**FOURTH FLOOR**

# FLOOR PLAN

AREA (in SQFT)



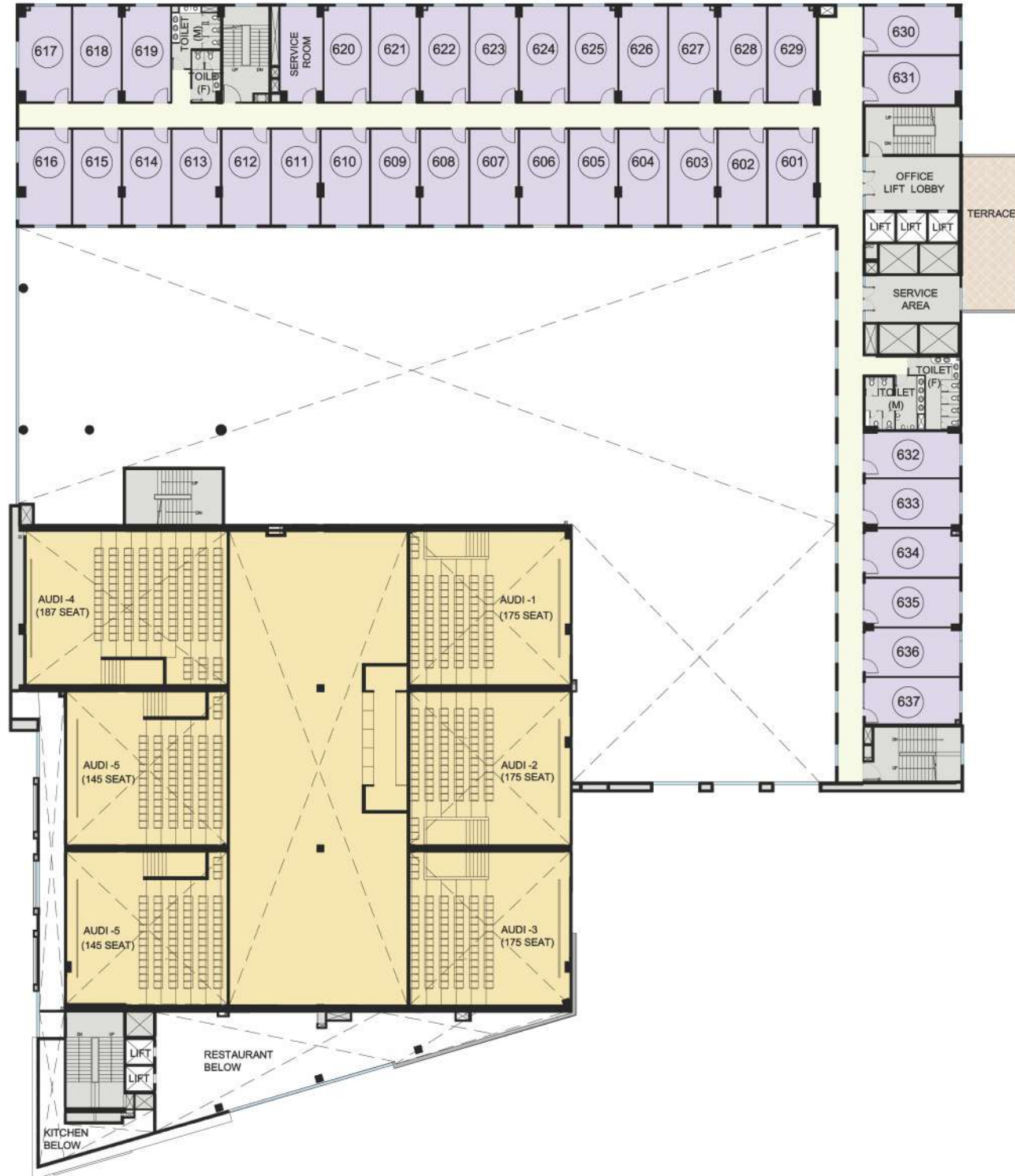
NO.	USAGE	CARPET AREA	BUILT UP AREA	SUPER AREA	SHOP DIMENSIONS
<b>OFFICE AREA</b>					
501	OFFICE	322	357	547	12'-5.5" X 25'-3"
502-515	OFFICE	322	344	527	12'-9.5" X 25'-3"
516	OFFICE	348	388	593	13'-11" X 25'-3"
517	OFFICE	346	388	593	13'-11" X 25'-3"
518	OFFICE	321	344	527	12'-9.5" X 25'-3"
519	OFFICE	321	344	527	12'-9.5" X 25'-3"
520	OFFICE	321	344	527	11'-11.5" X 25'-3"
521-528	OFFICE	321	344	527	12'-9.5" X 25'-3"
529	OFFICE	322	357	547	12'-9.5" X 25'-3"
530	OFFICE	322	357	547	25'-3" X 12'-9.5"
531	OFFICE	322	344	527	25'-3" X 12'-9.5"
<b>TOTAL</b>		<b>10021</b>	<b>10791</b>	<b>16529</b>	
<b>SHOPPING AREA</b>					
532	SHOP	306	331	507	25'-3" X 12'-1.5"
533	SHOP	321	344	527	25'-3" X 12'-9.5"
534	SHOP	321	344	527	25'-3" X 12'-9.5"
535	SHOP	321	344	527	25'-3" X 12'-9.5"
536	SHOP	321	344	527	25'-3" X 12'-9.5"
537	SHOP	321	357	547	25'-3" X 12'-9.5"
538	RESTAURANT	1962	2072	3170	
<b>TOTAL</b>		<b>3873</b>	<b>4136</b>	<b>6332</b>	
<b>MULTIPLEX AREA</b>					
540	MULTIPLEX	10288	10804	16530	



**FIFTH FLOOR**

# FLOOR PLAN

AREA (in SQFT)



OFFICE NO.	USAGE	CARPET AREA	BUILT UP AREA	SUPER AREA	SHOP DIMENSIONS
<b>OFFICE AREA</b>					
601	OFFICE	322	357	547	12'-9.5" X 25'-3"
602-615	OFFICE	322	344	527	12'-9.5" X 25'-3"
616	OFFICE	351	387	593	13'-11" X 25'-3"
617	OFFICE	346	387	593	13'-11" X 25'-3"
618	OFFICE	321	344	527	12'-9.5" X 25'-3"
619	OFFICE	321	344	527	12'-9.5" X 25'-3"
620	OFFICE	321	344	527	12'-0" X 25'-3"
621-628	OFFICE	321	344	527	12'-9.5" X 25'-3"
629	OFFICE	322	357	547	12'-9.5" X 25'-3"
630	OFFICE	322	357	547	25'-3" X 12'-9.5"
631	OFFICE	322	344	527	25'-3" X 12'-9.5"
632	OFFICE	306	331	507	25'-3" X 12'-1.5"
633-636	OFFICE	321	344	527	25'-3" X 12'-9.5"
637	OFFICE	321	357	547	25'-3" X 12'-9.5"
<b>TOTAL</b>		<b>11935</b>	<b>12853</b>	<b>19691</b>	
<b>MULTIPLEX AREA</b>					
	MULTIPLEX	17422	19314	29550	

# FLOOR PLAN

AREA (in SQFT)



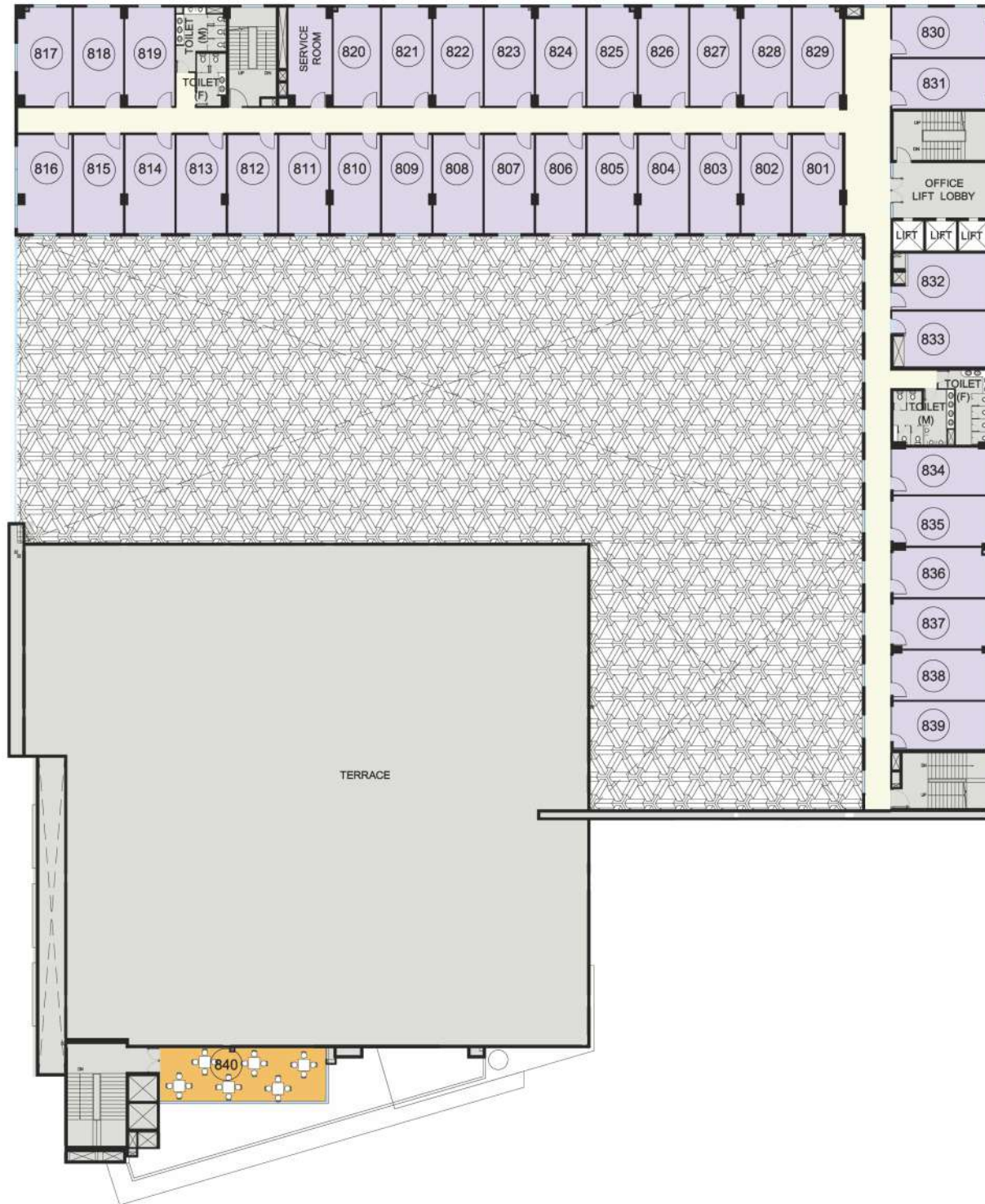
OFFICE NO.	USAGE	CARPET AREA	BUILT UP AREA	SUPER AREA	SHOP DIMENSIONS
<b>OFFICE AREA</b>					
701	OFFICE	322	357	547	12'-9.5" X 25'-3"
702-715	OFFICE	322	344	527	12'-9.5" X 25'-3"
716	OFFICE	348	388	593	13'-11" X 25'-3"
717	OFFICE	346	388	593	13'-11" X 25'-3"
718	OFFICE	321	344	527	12'-9.5" X 25'-3"
719	OFFICE	321	344	527	12'-9.5" X 25'-3"
720	OFFICE	321	344	527	11'-11.5" X 25'-3"
721-728	OFFICE	321	344	527	12'-9.5" X 25'-3"
729	OFFICE	322	357	547	12'-9.5" X 25'-3"
730	OFFICE	322	357	547	25'-3" X 12'-9.5"
731	OFFICE	322	344	527	25'-3" X 12'-9.5"
732	OFFICE	324	348	533	20'-8" X 14'-5.5" + 4'-2" X 6'-1"
733	OFFICE	324	348	533	21'-1" X 14'-5.5" + 4'-2" X 5'-9.5"
734	OFFICE	329	360	551	25'-3" X 12'-1.5"
735	OFFICE	306	331	507	25'-3" X 12'-9.5"
736-739	OFFICE	321	344	527	25'-3" X 12'-9.5"
<b>TOTAL</b>		<b>12588</b>	<b>13554</b>	<b>20761</b>	
<b>MULTIPLEX AREA</b>					
	PROJECTION ROOM	1383	1866	2854	
<b>SHOPPING AREA</b>					
740	RESTAURANT	1221	1546	2366	



**SEVENTH FLOOR**

# FLOOR PLAN

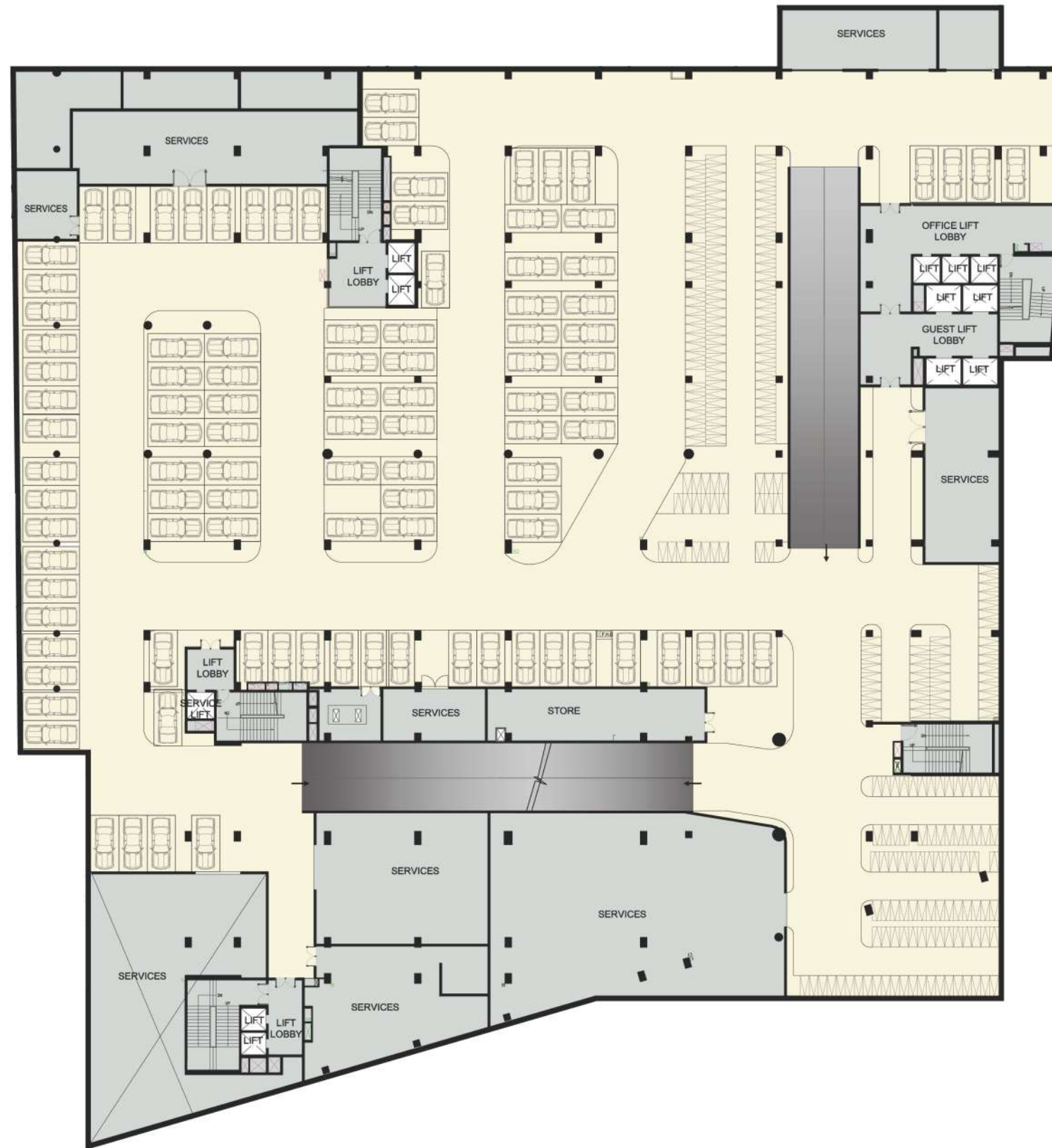
AREA (in SQFT)



OFFICE NO.	USAGE	CARPET AREA	BUILT UP AREA	SUPER AREA	SHOP DIMENSIONS
801	OFFICE	322	357	547	12'-9.5" X 25'-3"
802-815	OFFICE	322	344	527	12'-9.5" X 25'-3"
816	OFFICE	348	387	593	13'-11" X 25'-3"
817	OFFICE	346	387	593	13'-11" X 25'-3"
818	OFFICE	321	344	527	12'-9.5" X 25'-3"
819	OFFICE	321	344	527	12'-9.5" X 25'-3"
820	OFFICE	321	344	527	11'-11.5" X 25'-3"
821-828	OFFICE	321	344	527	12'-9.5" X 25'-3"
829	OFFICE	322	357	547	12'-9.5" X 25'-3"
830	OFFICE	322	357	547	25'-3" X 12'-9.5"
831	OFFICE	322	344	527	25'-3" X 12'-9.5"
832	OFFICE	324	348	533	20'-8" X 14'-5.5" + 4'-2" X 6'-1"
833	OFFICE	324	348	533	21'-1" X 14'-5.5" + 4'-2" X 5'-9.5"
834	OFFICE	329	360	551	25'-3" X 12'-1.5"
835	OFFICE	306	331	507	25'-3" X 12'-9.5"
836-839	OFFICE	321	344	527	25'-3" X 12'-9.5"
TOTAL		12588	13552	20761	
SHOPPING AREA					
840	RESTAURANT	628	669	1024	

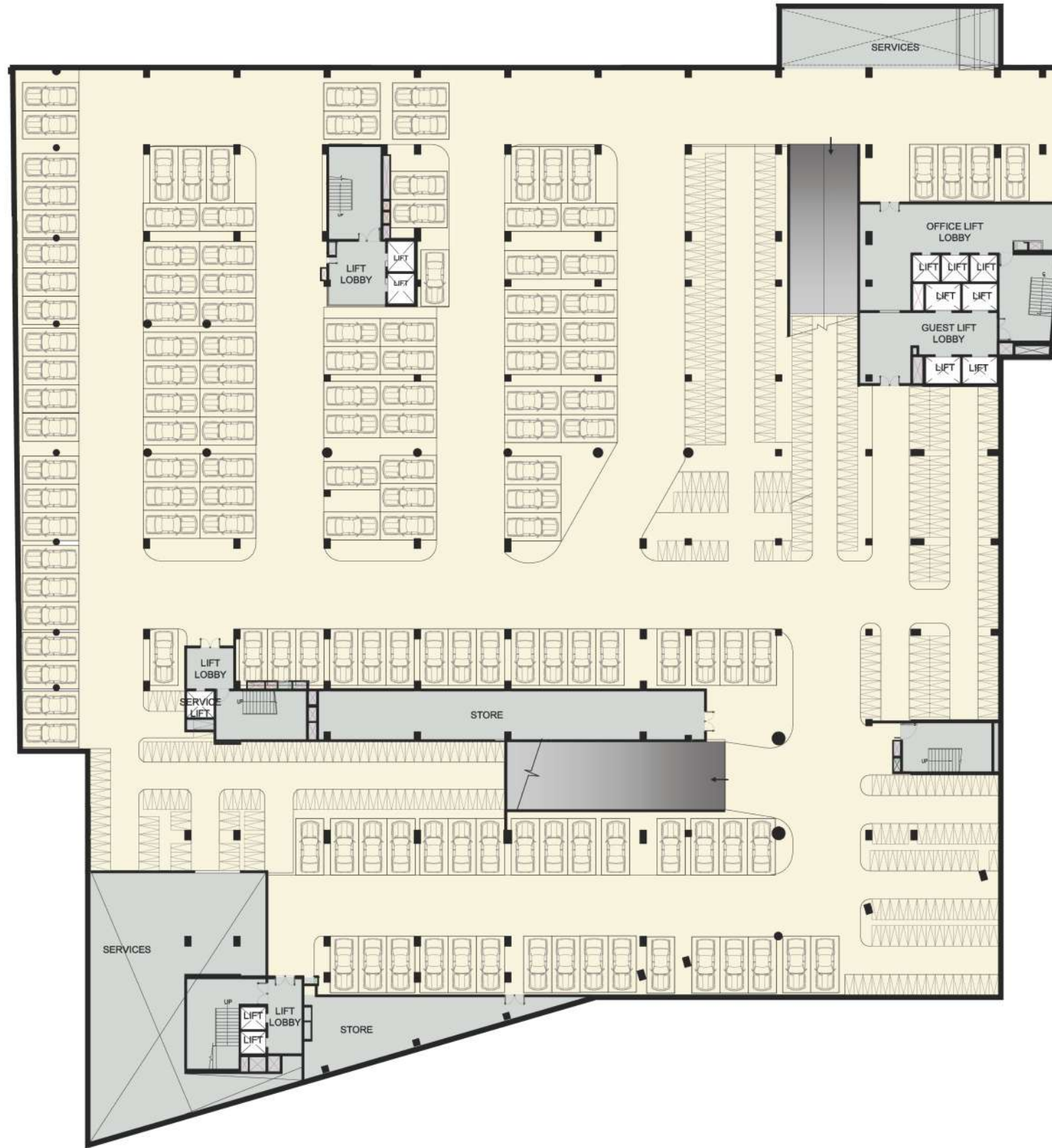


**EIGHTH  
FLOOR**



**FIRST**  
BASEMENT





**SECOND**  
BASEMENT

AN EXPERIENCE  
**PAR EXCELLENCE**







## PLATINUM & MUNDESHWARI

1st Floor, Amitabh Kunj, Main Road,  
Buddha Colony, Patna (Bihar) - 800 001. India  
Ph: +91 94310 11393, 97095 26990,  
97080 39411, 91350 10051  
info@mundeshwari.co.in, info@heritagemallandresidency.co.in  
www.mundeshwari.co.in

Site Office

**THE HERITAGE / ORBIT**

Danapur-Khagoul Road, Patna

Architect



**Design Forum International**

K-47, Kailash Colony, New Delhi-110 048. India  
Ph: +91-11-4655 6600, 98112 30901

Liaisoned by



**Balajee Interior & Properties Pvt Ltd**

309-A, Vasundhara Metro Mall, Boring Canal Road, Patna-1  
Ph: +91-97714 98840/98350 62840  
pankaj@bippl.in, balajee\_properties@yahoo.com, divya@bippl.in

**RERA No**

BRERAP41413-1/800/R-491/2019

Building Plan No. 90/17-18, Nagar Parishad,  
Danapur Nizamat.